



Installation Instructions: S&S Slip-on Muffler kits for 2018 Harley-Davidson® Softail® Models

DISCLAIMER:

NOT LEGAL FOR SALE OR USE IN CALIFORNIA ON ANY POLLUTION CONTROLLED MOTOR VEHICLE.

Not legal for sale or use on any EPA pollution controlled motor vehicle.

SAFE INSTALLATION AND OPERATION RULES:

Before installing your new S&S part, it is your responsibility to read and follow the installation and maintenance procedures in these instructions and follow the basic rules below for your personal safety.

- Gasoline is extremely flammable and explosive under certain conditions and toxic when breathed. Do not smoke. Perform installation in a well ventilated area away from open flames or sparks.
- If motorcycle has been running, wait until engine and exhaust pipes have cooled down to avoid getting burned before performing any installation steps.
- Before performing any installation steps, disconnect battery to eliminate potential sparks and inadvertent engagement of starter while working on electrical components.
- Read instructions thoroughly and carefully so all procedures are completely understood before performing any installation steps. Contact S&S with any questions you may have if any steps are unclear or any abnormalities occur during installation or operation of motorcycle with an S&S part on it.
- Consult an appropriate service manual for your motorcycle for correct disassembly and reassembly procedures for any parts that need to be removed to facilitate installation.
- Use good judgment when performing installation and operating motorcycle. Good judgment begins with a clear head. Don't let alcohol, drugs or fatigue impair your judgment. Start installation when you are fresh.
- Be sure all federal, state and local laws are obeyed with the installation.
- For optimum performance and safety and to minimize potential damage to carb or other components, use all mounting hardware that is provided and follow all installation instructions.
- Motorcycle exhaust fumes are toxic and poisonous and must not be breathed. Run motorcycle in a well ventilated area where fumes can dissipate.

IMPORTANT NOTICE:

Statements in this instruction sheet preceded by the following words are of special significance.



WARNING

Means there is the possibility of injury to yourself or others.



CAUTION

Means there is the possibility of damage to the part or motorcycle.

NOTE

Other information of particular importance has been placed in italic type.

S&S recommends you take special notice of these items.

WARRANTY:

All S&S parts are guaranteed to the original purchaser to be free of manufacturing defects in materials and workmanship for a period of twelve (12) months from the date of purchase. Merchandise that fails to conform to these conditions will be repaired or replaced at S&S's option if the parts are returned to us by the purchaser within the 12 month warranty period or within 10 days thereafter.

In the event warranty service is required, the original purchaser must call or write S&S immediately with the problem. Some problems can be rectified by a telephone call and need no further course of action.

A part that is suspect of being defective must not be replaced by a Dealer without prior authorization from S&S. If it is deemed necessary for S&S to make an evaluation to determine whether the part was defective, a return authorization number must be obtained from S&S. The parts must be packaged properly so as to not cause further damage and be returned prepaid to S&S with a copy of the original invoice of purchase and a detailed letter outlining the nature of the problem, how the part was used and the circumstances at the time of failure. If after an evaluation has been made by S&S and the part was found to be defective, repair, replacement or refund will be granted.

ADDITIONAL WARRANTY PROVISIONS:

- (1) S&S shall have no obligation in the event an S&S part is modified by any other person or organization.
- (2) S&S shall have no obligation if an S&S part becomes defective in whole or in part as a result of improper installation, improper maintenance, improper use, abnormal operation, or any other misuse or mistreatment of the S&S part.
- (3) S&S shall not be liable for any consequential or incidental damages resulting from the failure of an S&S part, the breach of any warranties, the failure to deliver, delay in delivery, delivery in non-conforming condition, or for any other breach of contract or duty between S&S and a customer.

Tools Required:

- 3/8" ratchet
- 3/8" drive torque wrench
- 15mm deep socket 3/8" drive
- 9/16" deep socket 3/8" drive
- 3/16" Allen socket 3/8" drive

Stock Muffler Removal:

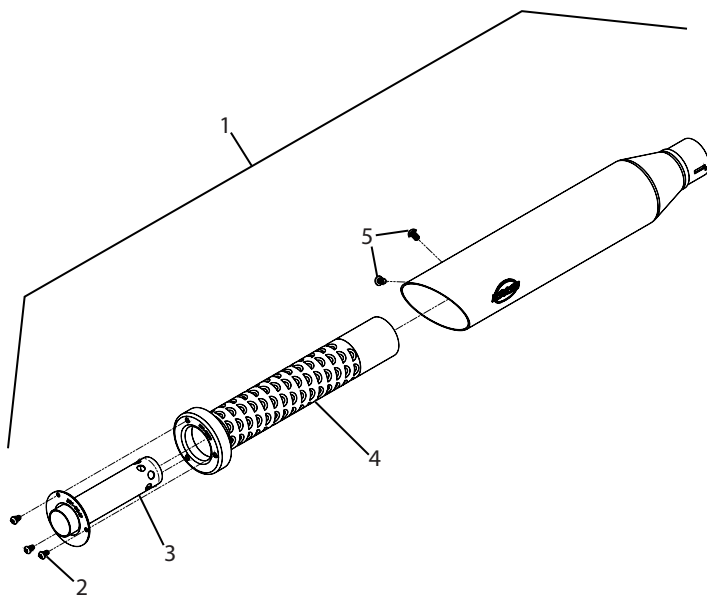
1. Loosen muffler clamps.
2. Remove the screws securing the mufflers to the mounting bracket. These screws can be discarded, new ones are provided.
3. Remove the mufflers from the head pipes.

New Muffler Installation:

1. Install the new muffler clamps onto each muffler. Note the direction of the muffler clamps, allow for easy access.
2. Install each muffler on the head pipe.

Replacement Parts-Slash Cut Mufflers

1. Muffler Assembly
M8 Softail® Except Heritage® Classic and Deluxe®
Top
Black.....551-0434
Chrome.....551-0437
Bottom
Black.....551-0446
Chrome.....551-0449
M8 Softail® Heritage® Classic and Deluxe®
Chrome, Front or Rear.....551-0458
 2. Screw, BHC, High Temp Lock Patch,
10-32x3/8", Stainless Steel.....500-0570
 3. DB Reducer Baffle Assembly.....551-0350
 4. Baffle Assembly.....551-0301
 5. Screw, BHC, High Temp Lock Patch, 1/4-20.....500-0441
- Parts Not Shown**
6. Hardware Kit, Muffler.....551-0425
 7. Screw, SHCS, w/Flat Washer, 1/4-20x1".....50-0092-S
 8. Clamp, Muffler, Band Style, 1.75".....551-0028
 9. Muffler Gasket.....551-0350



3. Locate the provided screws and fasten the mufflers to the factory bracket. Tighten to 120 in-lbs.
4. Tighten the exhaust clamps to 40 ft-lbs.
5. Thoroughly clean the mufflers with a non-abrasive cleaner before starting the engine.
6. After the first ride allow the bike to cool down and re-check fastener torque.

NOTES

- Both mufflers for the Deluxe and Heritage Classic models are the same and can be used in either position. For all other models there are specific top and bottom mufflers.
- Avoid the use of pressure washers, harsh chemicals or abrasive cleaners. If water gets into mufflers during washing, remove moisture to prevent corrosion by starting engine to warm up exhaust system.

Replacement Parts-Grand National Mufflers

1. Muffler Assembly
M8 Softail® Except Heritage® Classic and Deluxe®
Top
Black,.....551-0440
Chrome.....551-0443
Bottom
Black.....551-0452
Chrome.....551-0455
M8 Softail® Heritage® Classic and Deluxe®
Chrome Front or Rear.....551-0461
 2. Screw, SHC, High Temp Lock Patch,
10-32x3/4", Stainless Steel.....500-0569
 3. 4" End Cap, Grand National, Black.....551-0239
 4. DB Reducer Baffle Assembly.....551-0304
 5. Baffle Assembly.....551-0299
 6. Fiberglass Wrap.....551-0305
 7. Screw, BHC, High Temp Lock Patch, 1/4-20.....500-0441
- Parts Not Shown**
8. Hardware Kit, Muffler.....551-0425
 9. Screw, SHCS, w/Flat Washer, 1/4-20x1".....50-0092-S
 10. Clamp, Muffler, Band Style, 1.75".....551-0028
 11. Muffler Gasket.....551-0350

