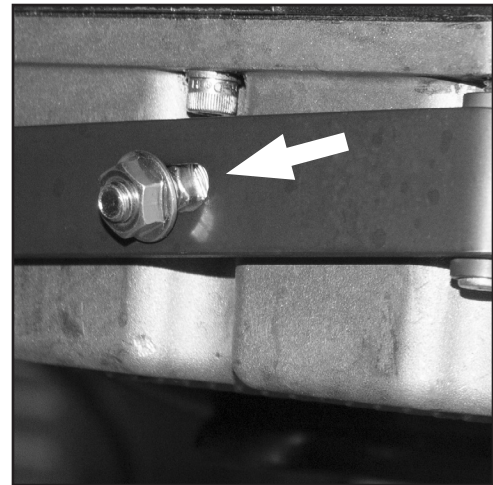


TOOLS REQUIRED:

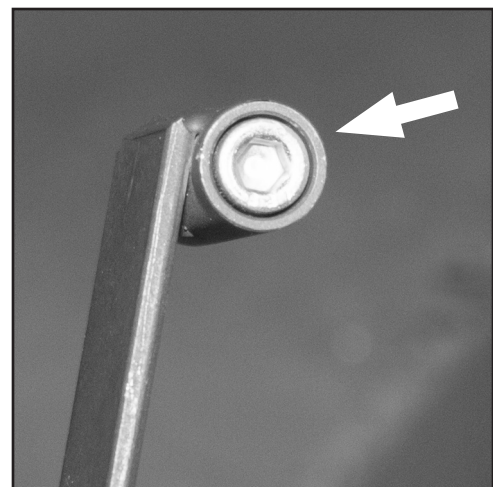
- ¼" drive ratchet
- ¼" drive ½" socket
- ¼" drive ⅞" socket
- ¼" drive 6" extension
- ⅜" Allen wrench
- ¼" Allen wrench
- ⅝" Allen wrench
- Snap ring pliers
- ⅝" nut driver or flat screwdriver
- ⅞" box wrench
- ½" box wrench
- ⅝" box wrench
- 14MM box wrench
- 15MM box wrench
- 22MM box wrench

1. Unpack the header kit and familiarize yourself with the components.
2. Remove saddlebags.
3. Remove mufflers.
4. Remove right front floorboard and mounting brackets.
5. Loosen the left side exhaust pipe clamp and remove left side head pipe.
6. Remove the bolt and nut from the clamp that holds the header to the bracket on the side of the transmission.
7. Disconnect oxygen sensors (2007-'08) models.
8. Loosen and remove the ⅝"-24 hex flange port nuts. It may be necessary to remove the heat shields to access the flange nuts on some models.
9. Remove the stock header. Remove the exhaust flanges, retainer rings and Oxygen sensors (if present), these will be used on the new header.
10. Remove the exhaust bracket that is mounted to the top of the starter, this bracket will not be needed. Replace screws.
11. Remove the exhaust bracket located on the right side of the transmission. The transmission end cover will need to be removed to access all of the fasteners (1995-'06). Replace transmission end cover and screws. Replace gasket if damaged.
12. Locate the provided angle bracket (#8) in the hardware kit. Remove the two lowest ⅝" socket head cap screws on the side of the transmission. Apply thread locking compound to these screws and install the angle bracket, torque to 15-18 ft.-lb.

13. Remove the four ¼" socket head cap screws closest to the rear of the oil pan (leave the rear center screw in place). Locate the oil pan mounting bracket (#11) and 4, ¼"-20 x 1-⅞" socket head cap screws (#13) and a ⅝" carriage bolt (#13). Loosely place the carriage bolt in the slot of the bracket with threaded end facing out as shown in (Picture 1). Apply thread locking compound to the screws and install the oil pan bracket. *Note that the screws must be countersunk in the bracket (Picture 2).*

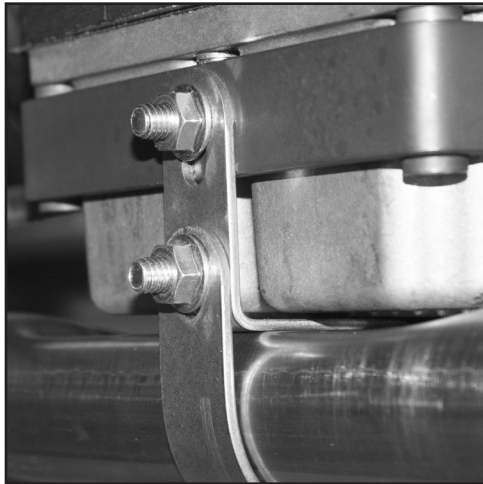


PICTURE 1



PICTURE 2

14. Torque the ¼" screws to 100 in.-lb.
15. Inspect exhaust port gaskets, replace as necessary with Firebrand p/n 99-1016.
16. Install the flanges and retaining rings on the new exhaust header. Install oxygen sensors or supplied plugs (#6). Use anti-seize on the threads.
17. Install new header. Seat front pipe first then rear. A firm pull rearward on the rear header, while keeping the front header seated, may be necessary to clear the rear head casting. Be careful not to damage the gaskets. Install the provided ⅝"-24 hex flange nuts (#17) but do not fully tighten yet.
18. Locate the ⅝" carriage bolt (#7) and hex flange nut (#10). Fasten the side P-clamp (#9) to the transmission bracket (#6), do not fully tighten yet. *Note: Both legs of the P-clamp should be under the transmission bracket.*
19. Install retained clamp or Firebrand 99-1013 on the expanded end of the crossover pipe with the bolt to the inside of the header and the nut facing down.
20. With the expanded end of the crossover pipe facing forward, install the crossover pipe P-clamp onto the crossover pipe in the orientation shown (Picture 3). Use pliers to close the ends of the clamp. Loosely install the ⅝" carriage bolt (#13) and flange nut (#15) but do not fully tighten yet.
21. Position the crossover pipe under the oil pan and slide the expanded end onto the end of the front header pipe using existing clamp or Firebrand 99-1013.
22. Locate a ⅝" flange nut (#15) and loosely fasten the crossover pipe P-clamp to the transmission bracket with the carriage bolt.
23. Apply anti-seize to the muffler clamp threads. Re-install mufflers.
24. Ensure the entire exhaust system is properly aligned and tighten all fasteners beginning at the mufflers and move forward to the head pipe flanges.
25. Locate the heat shield clamps and place them in the heat shield clips. Orient the screw heads as shown in the parts diagram so that they are easily accessible when the shields are installed. Install the shields and tighten the clamps.
26. Connect the oxygen sensor electrical connectors.
27. Install the right-side floor board in the lowest position.
28. Before operating the motorcycle, clean the heat shields and mufflers with soap and water or window cleaner. Any oil or fingerprints will permanently burn into the coating if not removed.
29. Check all mounting hardware to be sure it is tight before and after first operation of motorcycle. Periodically, check tightness of all mounting hardware.



PICTURE 3

USE AND CARE: Wash the exhaust system with the same care you use when washing your motorcycle. Use mild soap and water. **DO NOT** use harsh chemicals, abrasive cleaners or high pressure washers

DISCLAIMER:

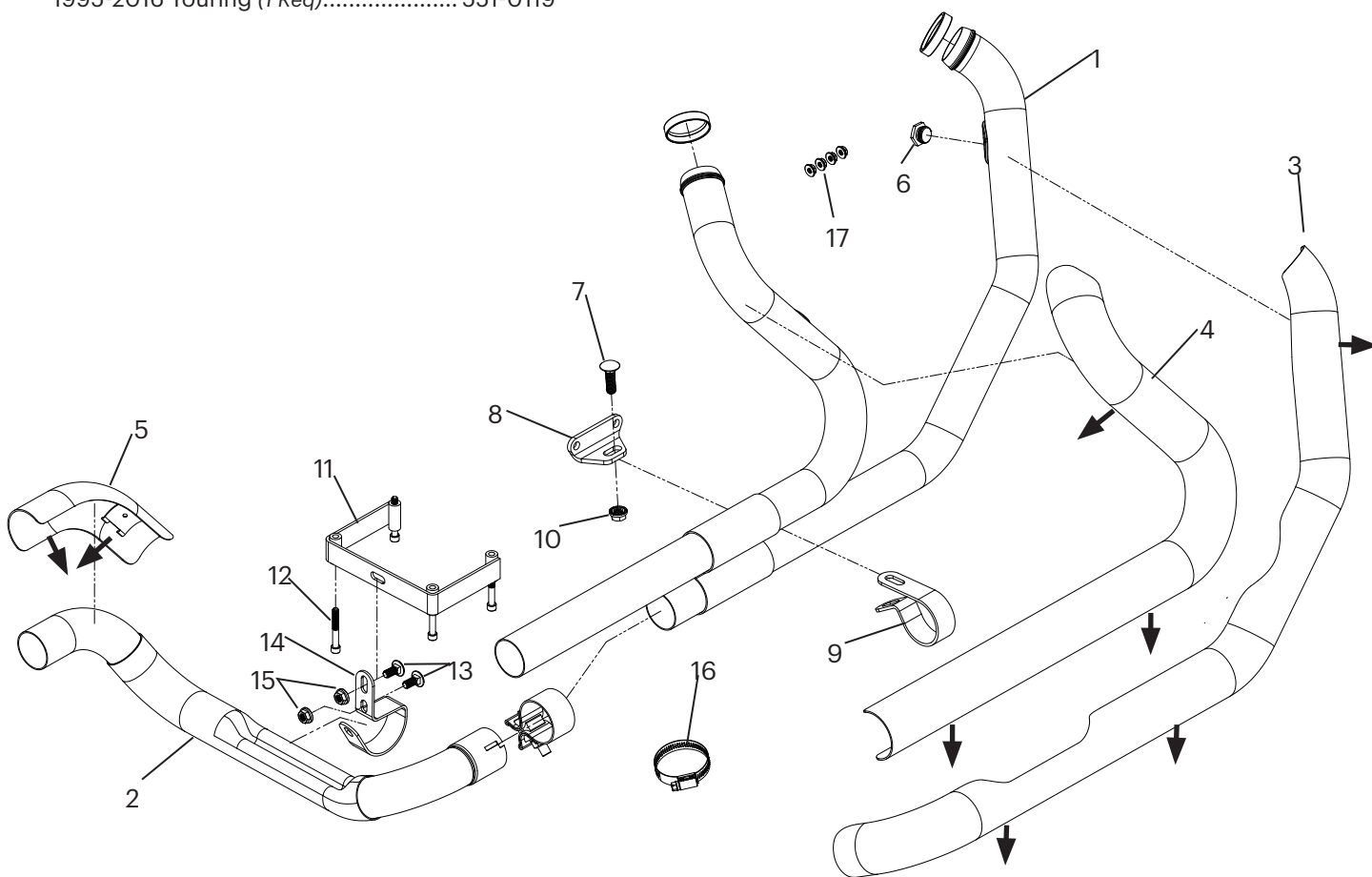
Firebrand exhaust systems are warranted against defects in material and workmanship for a period of 1 year from the date of purchase from an authorized dealer. This warranty does not cover discoloration or rust of chrome finishes. This warranty is limited to the repair or replacement of a product proven to be defective from normal use. Firebrand exhaust systems are designed to fit and operate on OEM motor and chassis. This warranty does not cover any product subject to abuse, misuse, improper installation or modification. Every effort is made for Firebrand Exhaust Systems to provide improved cornering clearance. However, due to design and space limitations on some motorcycle models, ground and cornering clearance may not be improved and in some cases may be reduced. Be sure to follow proper installation instructions

NOT LEGAL FOR SALE OR USE IN CALIFORNIA ON ANY POLLUTION CONTROLLED MOTOR VEHICLE. Not legal for sale or use on EPA federal pollution controlled vehicles originally equipped with catalyst. *Qualified manufacturer declared emissions replacement part on FL touring models listed below. California Models: FL Touring Fuel Injected MY 1995-2003, and 2007 CVO FL Touring MY 2000-2003 49 State Models: FL Touring Carbureted MY 1995-2005 FL Touring Fuel Injected MY 1995-2005 and 2007-2008 CVO FL Touring MY 2000-2005

firebrand

SMOOTHBORE HEADER REPLACEMENT PARTS

- | | | | |
|---|----------|--|-----------|
| 1. Pipe, Header, Weldment, 1995-2008 Touring
(1 Req)..... | 551-0083 | 10. Nut, Flanged, Serrated, 3/8-16
(1 Req)..... | 500-0554 |
| 2. Tube, Crossover, Weldment, 1995-2008 Touring
(1 Req)..... | 551-0077 | 11. Bracket, Assembly, Transmission, Pan
1995-2008 Touring (1 Req)..... | 551-0126 |
| 3. Shield,Front,1995-2008 Touring (1 Req)
Chrome | 551-0091 | 12. Screw, SHC, 1/4-20 x 1-7/8", Zinc Plated
(4 Req)..... | 500-0641 |
| Black | 551-0092 | 13. Bolt, Carriage, 5/16-18 x 3/4" (2 Req) | 500-0555 |
| 4. Shield,Rear,1995-2016 Touring (1 Req)
Chrome | 551-0103 | 14. Clamp, P-style, Crossover, 1995-2008 Touring
(1 Req)..... | 551-0120 |
| Black | 551-0104 | 15. Nut, Flanged, Serrated, 5/16"-18
(2 Req)..... | 50-5053-S |
| 5. Shield,Left,1995-2016 Touring (1 Req)
Chrome | 551-0115 | 16. Clamp, Hose, Worm Drive, SAE #20
(8 Req)..... | 551-0527 |
| Black | 551-0116 | 17. Nut, HSFH,5/16-24 | 50-5025-S |
| 6. Plug, M18 x 1.5 Thread (2 Req) | 551-0122 | | |
| 7. Bolt, Carriage, 3/8-16 x 1-1/4" (1 Req). | 500-0553 | | |
| 8. Bracket, Transmission, Side,
1995-2008 Touring (1 Req)..... | 551-0125 | | |
| 9. Clamp, P-style, Side,
1995-2016 Touring (1 Req)..... | 551-0119 | | |



NOTE - Install #16 heat shield clamps with screw heads pointing in direction shown by arrows. →

firebrand